

# New in WinGPS 5

Route planner for open water and dutch inland waterways.

Easy route setting. For example planning a route from Arnhem to Terschelling over the IJsselmeer never was so simple!

## Touch operation on Windows 7 tablets

WinGPS 5 becomes operational on more and more devices. A Windows 7 plotter or touch screen in the cockpit.

## Stepless zooming

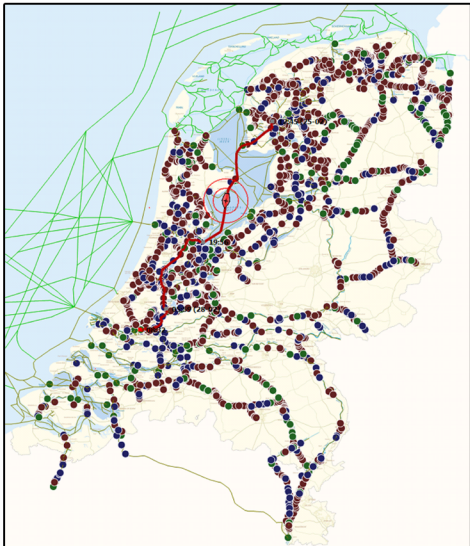
A 3D video card in your laptop enables rapid and almost stepless zooming. Charts remain clear and readable also when following head up.

## Bridge and Lock database

Now integrated in WinGPS 5. Easy access to opening hours and other information.

## Automatic online updates

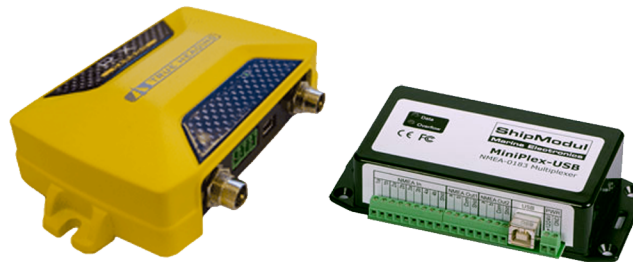
Available free updates for charts, GRIB-files, databases and WinGPS 5 are uploaded automatically.



Use WinGPS on every laptop or Windows 7 tablet on board

With WinGPS, digital charts and a GPS mouse, your laptop becomes a modern and low priced navigation system.

To ensure maximum safety, WinGPS Pro and Voyager give the possibility to connect external devices like your board computer and AIS transponder.



## System requirements

Windows XP, Vista or 7 with DirectX 9 Video Card (or higher)

[www.stentec.com](http://www.stentec.com)



Stentec Software

versie 5

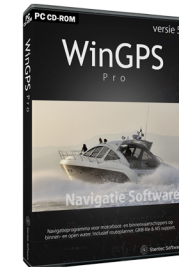
# WinGPS



New series navigation software for your laptop on-board. Equipped with route planner for open water and Dutch inland waterways.



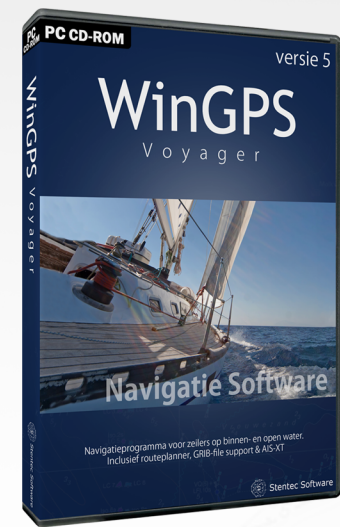
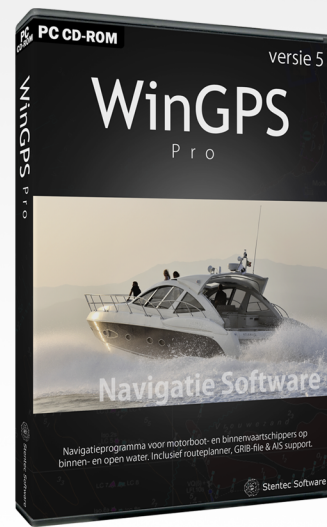
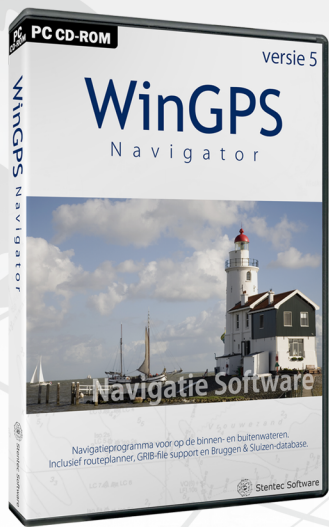
Navigator  
for starters



Pro  
for motorboats



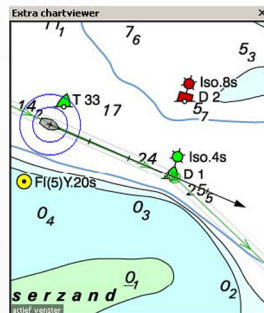
Voyager  
for sailboats



## N a v i g a t o r

- GPS-positioning with tracking chart
- Route creating on open water and inland Dutch waterways
- Up to date weather information from free GRIB-files
- Anchor watch

Ideal software for starting navigators. Sail or Motor boat, WinGPS 5 Navigator enables you to easily make your voyage plan.



Route-info		
Huidige route	Route 10	
0.4 nmls	4.2 nmls	14:43 06
DOG	DTGt	ETA
from 1	to 12	29-8-2006
TotR: 12m 30s		
Valgend waypoint 8		
6.5 kn	113°	0.7 nmls
VMG	CTS	DTG
TTG: 6m 21s		
XTE: 12m width: 100m		
Vorig waypoint 7		

## P r o

- GPS-positioning with tracking chart
- Route creating on open water and inland Dutch waterways
- Actual weather information from free GRIB-files
- Current and tides a.o. NLTides
- NMEA instruments including auto pilot
- AIS connection (transponders and receivers)



Due to the rotating map option and AIS WinGPS Pro is often used by motor boat and inland waterway skippers.

## V o y a g e r

- AIS extrapolation mode for fluent visibility of other AIS ships
- Polar diagram for optimal route planning and maximum speed
- Actual weather and tides information from free GRIB-files
- Interactive route planning
- NMEA instruments connectable (wind, depth meter, autopilot, AIS)
- Future AIS traffic along the route by using the time slide
- Easy setting of "mast routes"



Takes sail boat properties, wind, tides, current and opening times of bridges and locks into account. This provides safety and advantage during competitions.